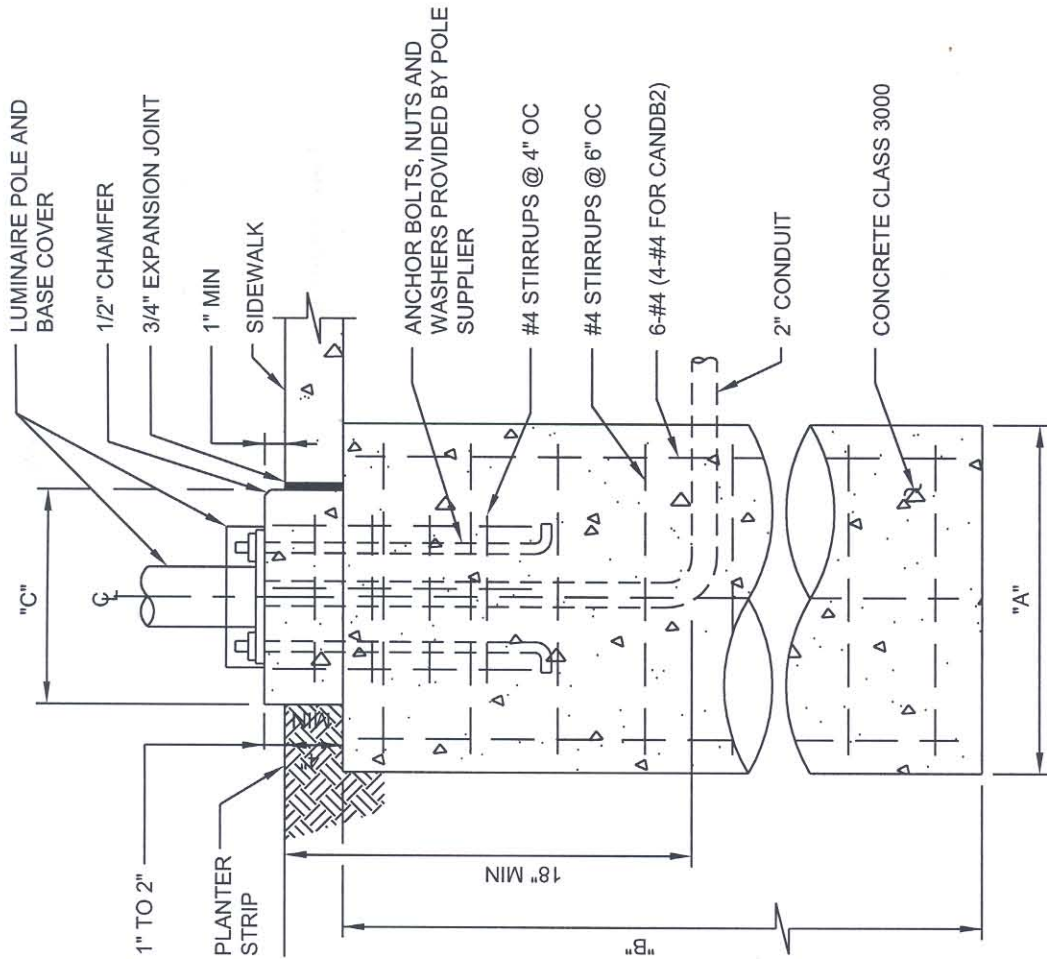


LUMINAIRE POLE FOUNDATION TABLE				
LUMINAIRE POLE DESCRIPTION	CITY OF MILL CREEK STD PLAN NUMBER	FOUNDATION DIAMETER "A"	FOUNDATION HEIGHT "B"	PEDESTAL WIDTH (SQUARE) "C"
CANDB2 (CANDELA BOLLARD SERIES BY LUMEC)	LGT 071	1'-3"	2'-6"	8"x8"
PTR5-1308 (PEDESTRIAN PATH LIGHT BY TEKA)	LGT 072	2'-0"	4'-6"	14"x14"
CANDS6 (CANDELA PEDESTRIAN PATH LIGHT BY LUMEC)	LGT 073	2'-0"	4'-6"	14"x14"
PR4-4R16-124 (STREET LIGHT BY ARCHITECTURAL AREA LIGHTING)	LGT 074C	2'-0"	4'-6"	14"x14"



	STANDARD PLAN	LGT 082
	TYPICAL LUMINAIRE POLE FOUNDATION DETAIL	
APPROVED: <i>Douglas Jefferson</i> Director of Public Works/City Engineer		
REVISION: MAR 2005	NOT TO SCALE	BY: JC