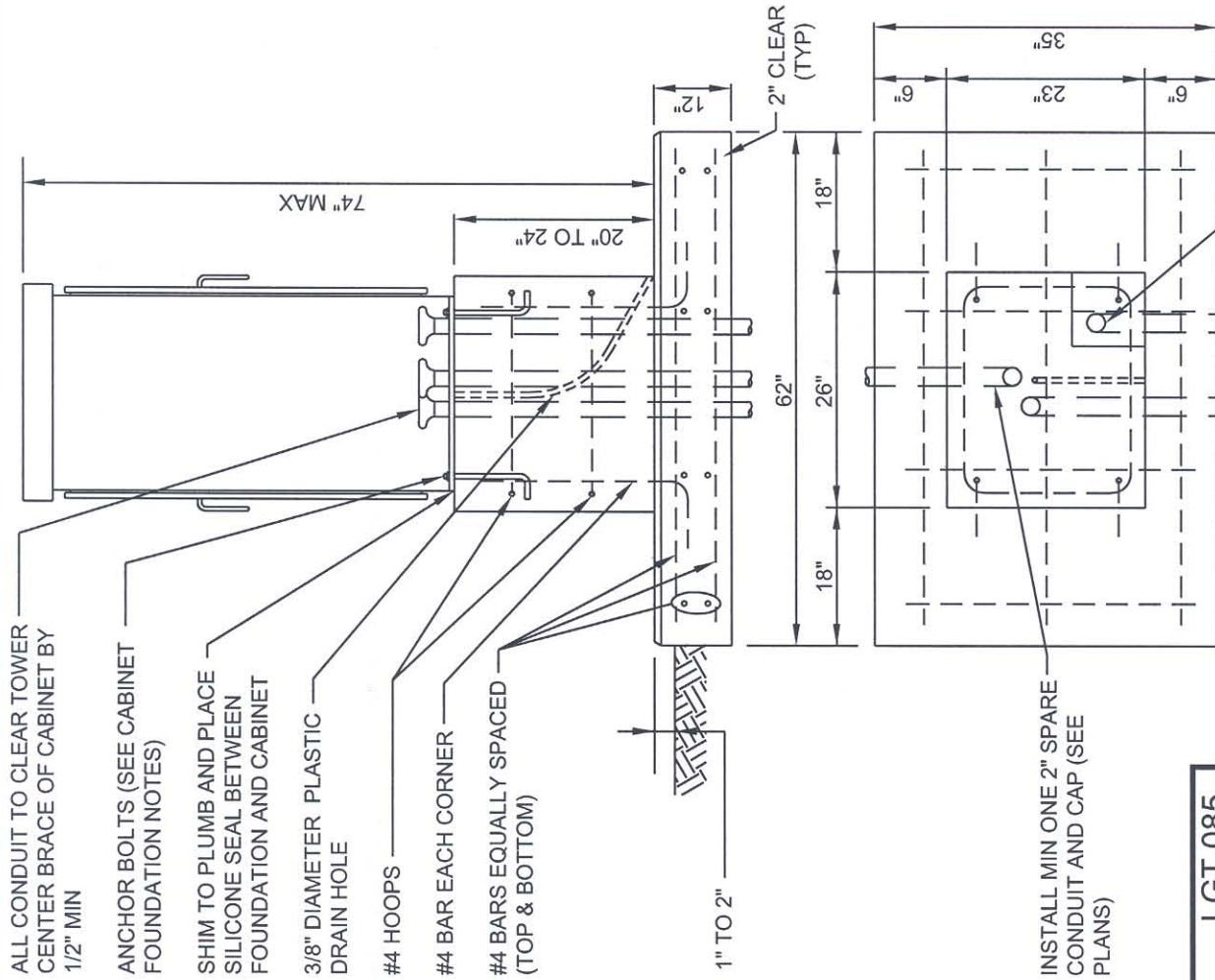
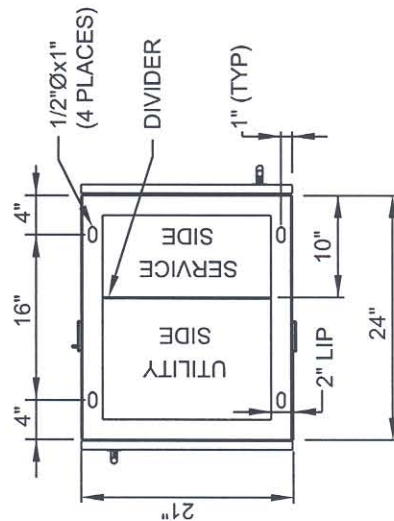


CABINET FOUNDATION NOTES:

1. PADMOUNT SHALL BE CLASS 3000 CONCRETE UNLESS OTHERWISE NOTED ON THE PLANS.
2. WHERE PADMOUNT IS LOCATED IN SIDEWALK, CONSTRUCT MOUNT TOP FLUSH WITH SIDEWALK GRADE, OMITTING CHAMFER WHERE TOP AND SIDEWALK ABUT.
3. PADMOUNT DESIGN IS TYPICAL: CONTRACTOR SHALL USE CABINET MANUFACTURER'S SPECIFICATIONS (SEE CITY OF MILL CREEK STD PLAN LGT 084 FOR ELECTRICAL SERVICE CABINET DETAILS) TO ASSURE PROPER FIT OF CABINET ON BASE WITH RESPECT TO CONDUIT PLACEMENT.
4. CABINET SHALL BE ATTACHED WITH AASHTO M 164 CHEMICALLY BONDED ANCHORS TO PADMOUNTS. ANCHOR INSTALLATION SHALL BE AASHTO GRADE A307 HOT DIPPED GALVANIZED 1/2"x8"x2". ANCHOR BOLTS SHALL BE SUPPLIED BY CABINET MANUFACTURER.



ALL CONDUIT TO CLEAR TOWER CENTER BRACE OF CABINET BY 1/2" MIN

ANCHOR BOLTS (SEE CABINET FOUNDATION NOTES)

SHIM TO PLUMB AND PLACE SILICONE SEAL BETWEEN FOUNDATION AND CABINET

3/8" DIAMETER PLASTIC DRAIN HOLE

#4 HOOPS

#4 BAR EACH CORNER

#4 BARS EQUALLY SPACED (TOP & BOTTOM)

1" TO 2"

2" CLEAR (TYP)

18" 26" 62" 18"

6" 23" 36"

74" MAX

20" TO 24"

INSTALL MIN ONE 2" SPARE CONDUIT AND CAP (SEE PLANS)

2" UNDERGROUND SERVICE ENTRANCE FEEDER CONDUIT TO BE LOCATED IN CORNER (WITHIN 4"x4" SPACE)

 DEPARTMENT OF PUBLIC WORKS	STANDARD PLAN	LGT 085
	ELECTRICAL SERVICE CABINET (TYPE "A") FOUNDATION DETAILS	
APPROVED: <i>Douglas J. Janssen</i> Director of Public Works/City Engineer		BY: JC
REVISION: MAR 2005		NOT TO SCALE